

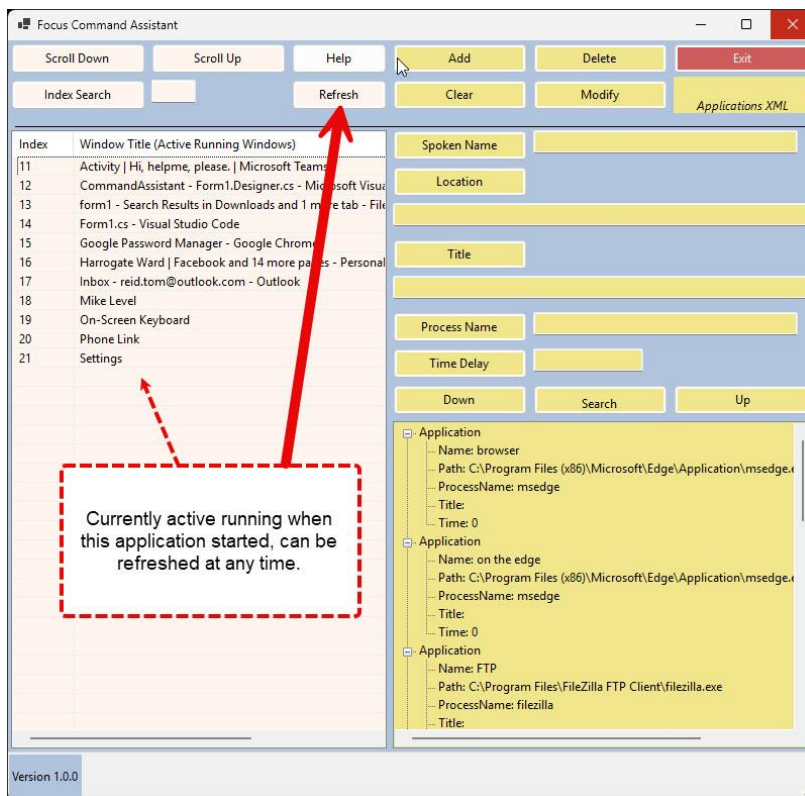
## FOCUS COMMAND ASSISTANT

To call of this program, once all of the focus.dat commands are imported:

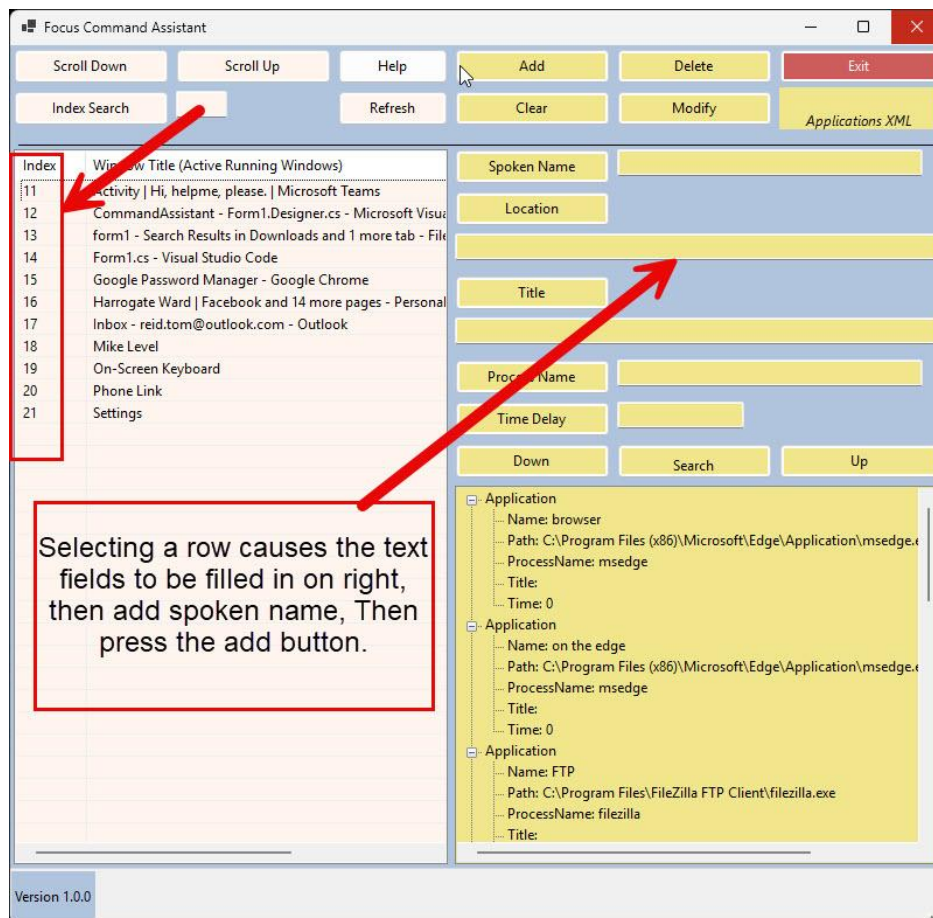
say “**command assistant**”

This tool helps to build and manage the applications XML file where you can use the focus command to search for, or start up, a particular application. This can be very handy for applications whose names are difficult for invoke by the actual name of the application. For example, an application called FileZilla is the FTP application that I use. So, when I say “Focus FTP”, the focus application probably will not find any running application with a title or process name of FTP, so it will then consult the applications.xml file found in my documents folder, then under U4D/U4D\_data/Focusing. Assuming that an entry for FTP has been defined, then the program that I have defined it will open up.

Here is what you will see:



When the program is started, it finds all of the running applications that have visible windows associated. There is an index number associated with each application. You can do an index search, by entering the number to the right of the “index search” button. Upon doing that, the application will fill in the appropriate fields into the form on the right. This then gives you a chance to dictate an easy to say “spoken name”. This is the name that you will use to try to focus on that application in the future.



Press the “Add” button to write the information to the XML file. At this point, you can now test the focus command for this special case.

Both the delete button in the modify button will require you to select one of the applications in the XML list. You can do this in two ways.

First, if you're able to simply click on any of the entries found under the Application node for the target application.

Second, you can also do a search by entering, at least a substring, that matches the text in the field that you enter data into in the form. For example, in my illustration above, where I have a "Name:" of "browser", if I say "**Spoken Name**" then enter "browser" into the text field to its right, then say "**Search**" then the form fields will be filled in from the XML file.

I can then either do my delete or modify my command. To "**Modify**" an entry, once I have the form filled in, I can go to the text field associated with any of the fields for that particular application, and make the adjustments. Then press "**Modify**".